

POLYCARBONATE



100
transparent



130
transparent orange



140
transparent red



183
transparent smoked



340
glossy red



315
glossy dove grey



310
glossy white



380
glossy black

OVERMOULDED TECHNOPOLYMER



201
transparent + linen



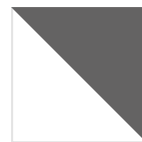
202
transparent + sand



204
transparent + orange

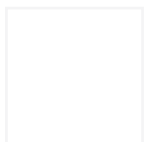


206
transparent + red

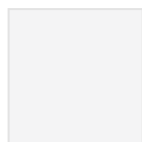


209
transparent + anthracite

TECHNOPOLYMER



10
white



11
linen



15
dove grey



81
anthracite



86
graphite



82
light grey



30
orange



40
red



42
geranium red



20
yellow



22
mustard yellow



51
light green



56
olive green



62
light blue



63
air-force blue



61
cornflower blue



60
blu



73
terracotta



72
cocoa



70
bronze



80
black



222
white/dove grey



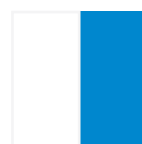
211
white/orange



212
white/red



221
white/light green



213
white/cornflower blue



214
white/anthracite

STEEL AND STAINLESS STEEL



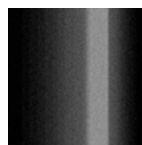
OS
satin brass
finish steel



OM
matt gold
finish steel



BV
vintage bronze
finish steel



NL
glossy black
nickel finish steel



NO
matt black
nickel finish steel



NB
matt nickel
finish steel



CR
chromed
steel



IS
satin
stainless steel



IL
polished
stainless steel



VB
matt white
coated steel
smooth finish



VL
matt linen coated
steel embossed
finish



VT
matt dove grey
coated steel,
embossed finish



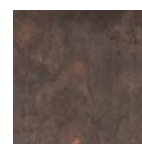
VF
matt graphite
coated steel,
embossed finish



VA
matt anthracite
grey coated steel,
embossed finish



VN
matt black coated
steel, embossed
finish



KE
corten effect
steel



VY
matt mustard
yellow coated
steel, embossed
finish



VE
matt terracotta
coated steel,
embossed finish



VD
matt olive green
coated steel,
embossed finish



VO
matt air-force
blue coated steel,
embossed finish

ALUMINIUM



AA
anodised
aluminium



AV 10
matt white coated
aluminium,
embossed finish



AV 15
matt dove grey
coated aluminium,
embossed finish



AV 70
matt bronze
coated aluminium,
embossed finish



AV 81
matt anthracite grey
coated aluminium,
embossed finish



AV 84
silver coated
aluminium,
polished finish

ZINC COATED STEEL INDOOR/OUTDOOR USE



ZB
zinc and matt
white coated,
embossed finish



ZL
zinc and matt linen
coated, embossed
finish



ZT
zinc and matt
dove grey coated,
embossed finish



ZA
zinc and matt
anthracite coated,
embossed finish



ZY
zinc and matt
mustard yellow
coated, embossed
finish



ZE
zinc and matt
terracotta coated,
embossed finish



ZO
zinc and matt
air-force blue
coated, embossed
finish



ZP
zinc and matt
antique pink coated,
embossed finish



ZV
zinc and matt olive
green coated,
embossed finish



ZN
zinc and matt black
coated, embossed
finish

SUMMER AND LEO FINISHING – ZINC COATED STEEL INDOOR/OUTDOOR USE



VB
zinc and matt
white coated steel,
embossed finish



VT
zinc and matt dove
grey coated steel,
embossed finish



VA
zinc and matt
anthracite grey
coated steel,
embossed finish



VM
zinc and matt brick
red coated steel,
embossed finish



VV
zinc and matt willow
green coated steel,
embossed finish



VZ
zinc and matt light
blue coated steel,
embossed finish

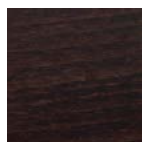
WOOD



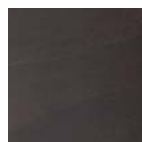
FN - 500
natural beech



F1 - FS - 501
bleached beech



FW - 502
wenge stained
beech



FK - 503
smoke beech



FB
black stained
beech



FG - 504
matt grey
lacquered beech



FA
matt aquamarine
lacquered beech



HS
bleached ash



HW
white
stained ash



HN
blond
stained ash



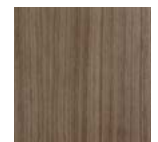
HB
black stained ash
with visible grains



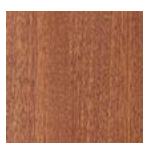
RN
natural oak



NR
black stained
oak



NC
Canaletto walnut



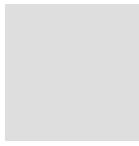
MS
Sapelli
mahogany

TABLE TOP FINISHES

COMPACT LAMINATE



10
white



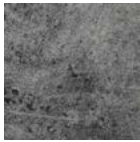
82
light grey



81
anthracite



15
dove grey



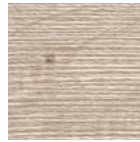
87
concrete effect



90
stone effect



91
grit effect



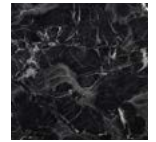
570
dove grey oak



571
beaver oak



572
Carrara marble
effect



574
black marble
effect



573
corten effect

GALVANIZED AND POWDER COATED STEEL



10
white



81
anthracite



56
olive green



63
air-force blue



73
terracotta

TEMPERED GLASS



412
white lacquered



401
smoked grey



413
screen printed



410
wave pattern

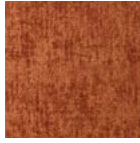
FABRICS

V5X VELVET – STANDARD

WATER REPELLENT



V5 A6



V5 A7



V5 A8



V5 A9



V5 B0

V3X VELVET – STANDARD

FIRE RETARDANT



V3 57



V3 58



V3 59

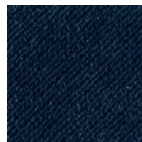
V3Y VELVET – ALTERNATIVE OPTIONS



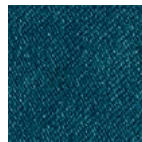
V3 60



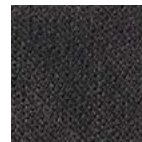
V3 62



V3 63



V3 64



V3 66

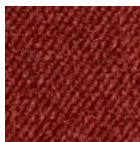
I 11M - UNI 9175 I Classe 1 - UNI 9177 EN EN 1021:14 Part.1/2 GB BS 5852:06 crib 5 F NF - P 92 503 - M1 D DIN 4102 - B1 USA California TB 117:2013
EN IMO MED - Ftp 307 Part.8

V4X VELVET – STANDARD

WATER REPELLENT



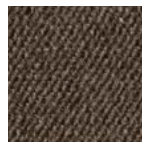
V4 38



V4 39



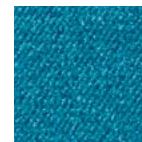
V4 40



V4 44



V4 47



V4 50

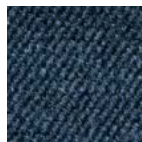
V4Y VELVET – ALTERNATIVE OPTIONS



V4 45



V4 46

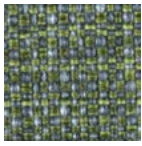


V4 48



V4 49

TX FABRIC – STANDARD



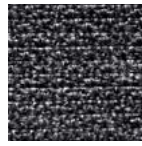
T5 26



T5 27



M2 09
water repellent



T3 25
fire retardant



I Classe 1

USA Calif. Bull. 117 June 2013

GB BS 5852 Crib N.5 using a CM Foam 35 Kg/cu.m.

EN EN 1021 Part. 1-2 using a CM Foam 35 Kg/cu.m. Oeko-Tex Standard 100



T6 28
ignifugo



UNI 9175 (CL 1,IM)
UNI 8456 (CL 1)
UNI EN 1021 1-2
BS5852 1-2

TY FABRIC – ALTERNATIVE OPTIONS (for Lady B Pop: recommended fabric)

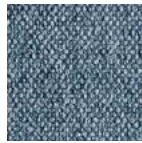
WATER REPELLENT



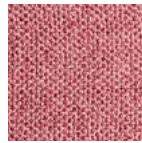
T9 78



T9 79



T9 80



T9 85

EPX SIMIL-LEATHER – STANDARD

FIRE RETARDANT



EP 70



EP 73



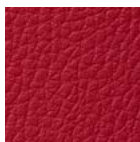
EP 75



EPY SIMIL-LEATHER – ALTERNATIVE OPTIONS



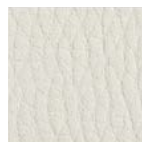
EP 71



EP 72



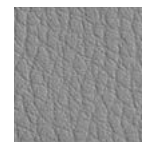
EP 74



EP 67



EP 68



EP 69



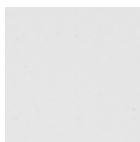
I Classe 1. IM (UNI 9175) **EN** 1021/1 **EN** 1021/2

CNY NATURAL LEATHER – ALTERNATIVE OPTIONS

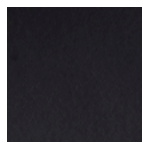
FIRE RETARDANT



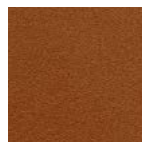
CN 82



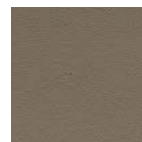
CN 83



CN 84



CN A1



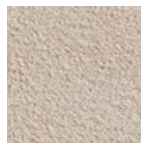
CN A2



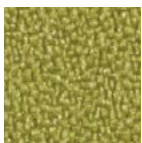
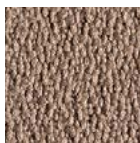
I Classe 1. IM

WFY WOOL – ALTERNATIVE OPTIONS**FIRE RETARDANT****WF 95****WF 96****WF 97****WF 98**

I Classe 1 IM con schiuma standard ignifuga con densità 25 Kg/cu.m. **EN** EN 1021 Part. 1-2 using a standard foam 20/22 Kg/cu.m.

MX FABRIC – STANDARD**FIRE RETARDANT****M1 05****MY FABRIC – ALTERNATIVE OPTIONS****M1 16****M1 17****M1 18****M1 19****M1 20**

USA Cal. Tech. Bulletin 117, Section E, Part. 1 (CALIFORNIA TEST)

T4X FABRIC – STANDARD**FIRE RETARDANT****T4 51****T4 55****T4Y FABRIC – ALTERNATIVE OPTIONS****T4 53****T4 A3****T4 A4****T4 A5****T4 56**

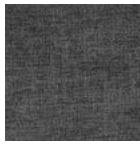
I Classe 1 **D** B1 DIN 4102 **F** M1 **GB** BS 5852 Crib 5 using a CM Foam 35 Kg/cu.m. **A** Q1 (OENORM 3800 Part 1) **A** B1 (OENORM B3825)
EN EN 1021 Part. 1-2 using a CM Foam 35 Kg/cu.m. **EN** EN 13773 Burning Behaviour: class 1 **EN** EN 13501 - 1esp. 1,2 : B-s1, d0 **USA** Calif. Bull. 117 June 2013
EN EN ISO 6940/6941 **CH** Fire Protection Classification: 5.3

AY FABRIC – ALTERNATIVE OPTIONS

STAIN RESISTANT



T8 06



T8 07



T8 08

WPX ACRYLIC – STANDARD

WATERPROOF



WP 86



WP 87



WP 88



WP 89

KY FABRIC – ALTERNATIVE OPTIONS

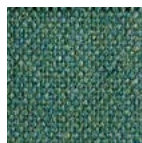
FIRE RETARDANT



K1 90



K1 99



K1 00

I UNI 9175 Classe 1 IM EN 1021 - 1 (cigarette) EN 1021 - 2 (match) GB BS 7176 Low Hazard
GB BS 5852 Ignition Source 5 GB BS 7176 Medium Hazard F NF D 60 - 013
A ÖNORM B 3825 & A 3800-1 (58kg/m3 CMHR Foam) GB BS 5867 - 2:Type B Curtains & Drapes



K2 04

EN 1021 - 1 (cigarette) EN 1021 - 2 (match) GB BS 7176 Low Hazard
EN 13501 - 1 Adhered Class B, s1, d0 EN 13501 - 1 Un-adhered Class C s1, d0

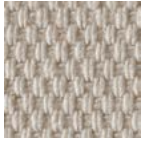
TC COM - CUSTOMER OWN MATERIAL



Minimum 20 pcs.
Fabric to be approved.

FABRICS FOR FIXED AND MOBILE CUSHIONS

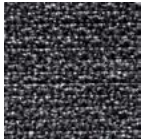
PANAMA COTTON for Igloo Chair cushions (Art. 1500) | for Miss B cushions (Art. 1504)



21

FABRIC for Igloo Chair cushions (Art. 1500) | for Miss B fixed cushions

FIRE RETARDANT



I	Classe 1
USA	Calif. Bull. 117 June 2013
GB	BS 5852 Crib N.5 using a CM Foam 35 Kg/cu.m.
EN	EN 1021 Part. 1-2 using a CM Foam 35 Kg/cu.m. Oeko - Tex Standard 100

25

FABRIC for Miss B cushions (Art. 1504) | for Miss B fixed cushions

FIRE RETARDANT



I	C1 (UNI 9174 - UNI 8456)
D	B1 (DIN 4102)
F	M1 (NF P 92501-7)
GB	CRIB 5 (BS 5852 part II)
EN	1021/1-2 cigarette 2 match
EN	BS 7176 NH (Medium Hazard)
EN	NF D 60013 (AM18)

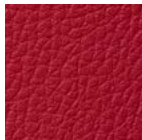
32

SIMIL-LEATHER for Miss B fixed cushions

FIRE RETARDANT



71



72



73

I	Classe 1, IM UNI 9175
EN	EN 1021/1
EN	EN 1021/2

FABRIC for Miss B fixed cushions

STAIN RESISTANT



07

ACRYLIC for Summer cushions (Art. 1495)

OUTDOOR USE
WATER REPELLENT
STAIN RESISTANT



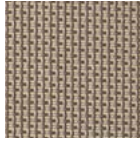
10

OTHER FABRICS

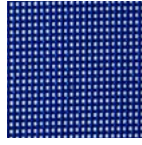
SYNTHETIC FABRIC, BREATHABLE, WATER-REPELLENT



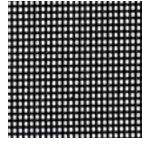
T10
white



T15
dove grey



T60
blue



T81
anthracite

NAUTICAL ROPE for Lisa Filò



N84
silver



N81
anthracite



N80
black



N15
dove grey



N30
orange

WOVEN EXTRUDED PVC for Lisa Club



P10
white



P86
graphite



P74
biscuit



P73
terracotta